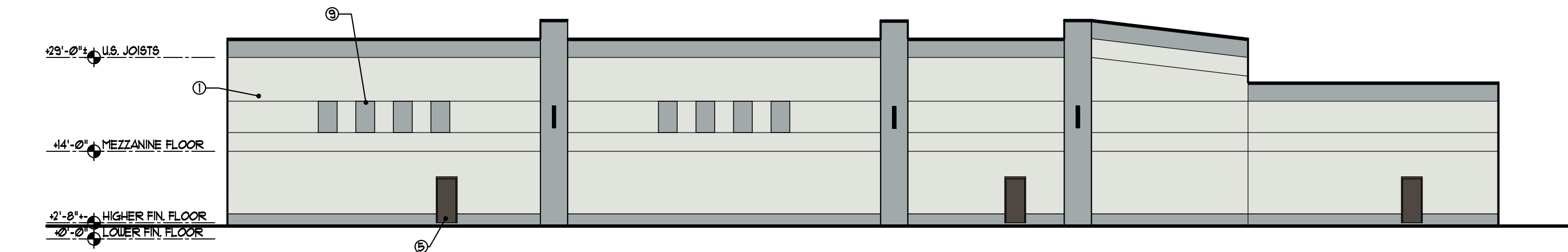
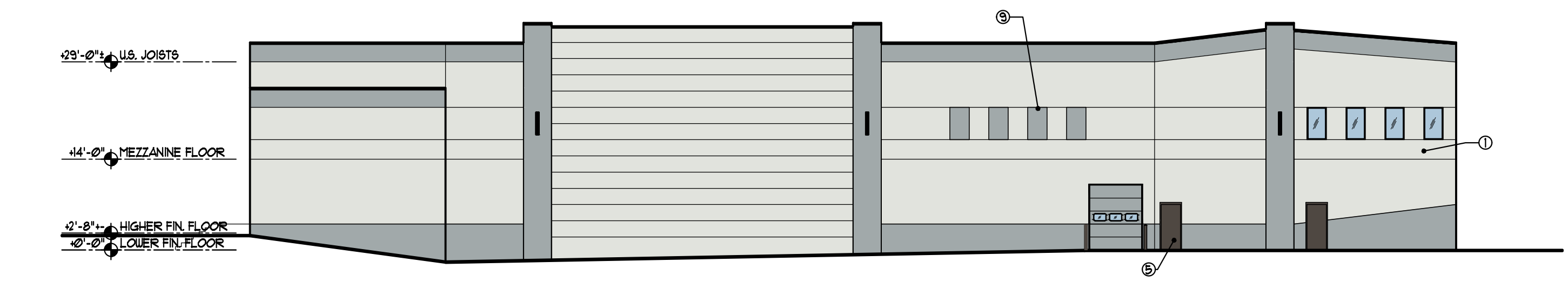


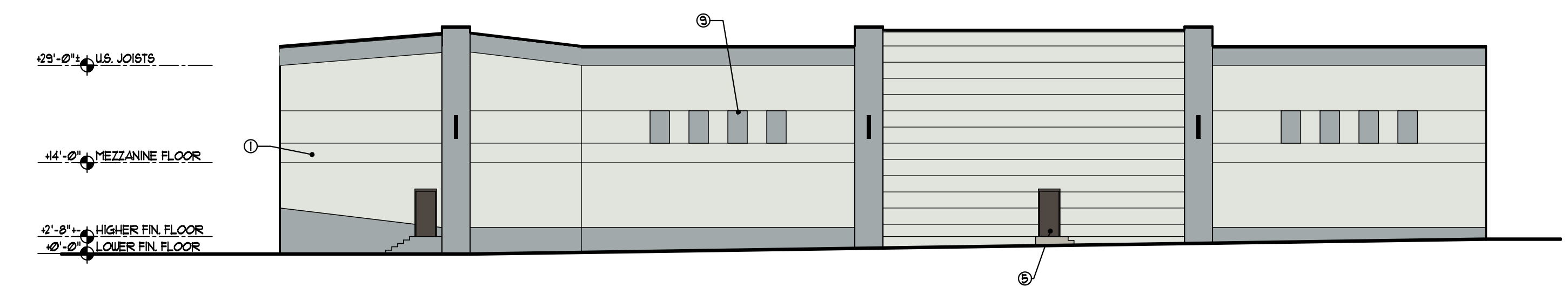
DATE 8/24/2020
 DRAWN BY SR / KE
 CHECKED BY SR
 PROJECT NO. 20-011-C
 SCALE AS NOTED
 REVISIONS



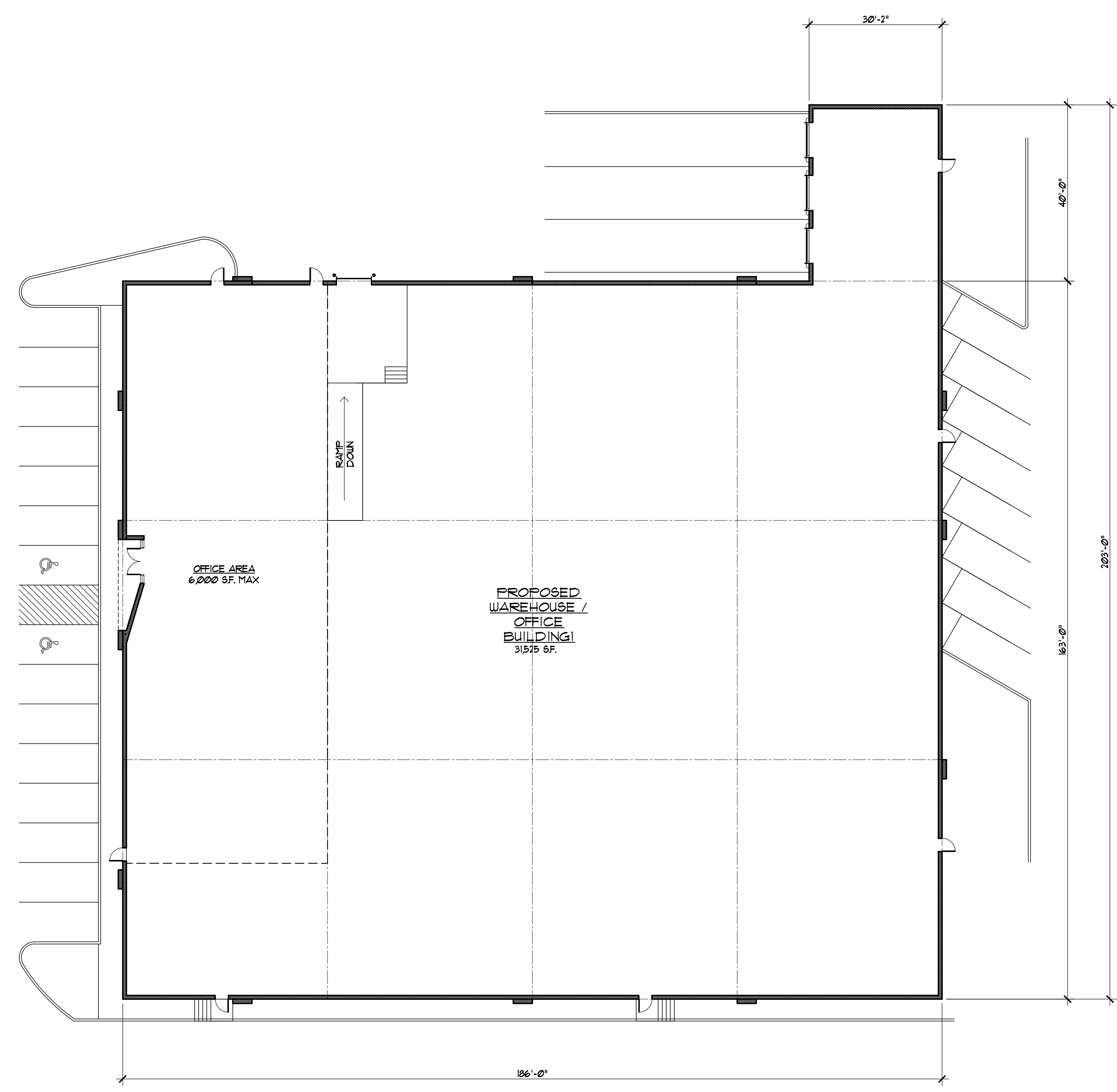
4 NORTH ELEVATION
 1/16" = 1'-0"



3 WEST ELEVATION
 1/16" = 1'-0"



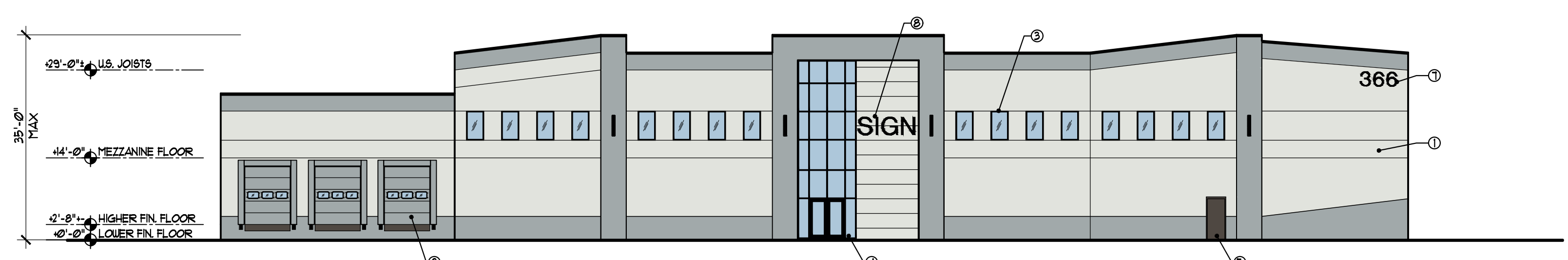
2 EAST ELEVATION
 1/16" = 1'-0"



B FLOOR PLAN
 1/16" = 1'-0"

WAREHOUSE: 31,525 SF.
 MEZZANINE: 6,000 SF.

FINISH KEY LEGEND	
①	CLOSED CONCRETE WALL FINISH COLOR / STYLE T.B.D.
②	OVERHEAD DOORS COLOR / STYLE T.B.D.
③	ALUMINUM WINDOW COLOR / STYLE T.B.D. - LOW E FIXED 2" FRAME
④	GLASS STOREFRONT COLOR / STYLE T.B.D. - LOW E FIXED 2" FRAME
⑤	HOLLOW METAL DOOR PAINT TO COMPLEMENT FACADE
⑥	DECORATIVE FAUX WINDOW COLORED CONCRETE WALL FINISH COLOR T.B.D.
⑦	ADDRESS IDENTIFICATION SIGNAGE NON-INTERNALLY ILLUMINATED CHANNEL LETTERS - 30" H x 6'-4" L = 15.84 SF
⑧	INTERNALLY ILLUMINATED SIGNAGE 3'-0" H x 9'-6" L SIGN+28.5 SF FACE
⑨	DECORATIVE FAUX WINDOW COLORED CONCRETE WALL FINISH COLOR T.B.D.



1 SOUTH ELEVATION
 1/16" = 1'-0"

PROPOSED NEW WAREHOUSE BUILDING FOR:
THE FISHING LINE, LLC
 366 RAMTOWN-GREENVILLE ROAD
 HOWELL TOWNSHIP, NEW JERSEY
 LOT: 29 BLOCK: 3

SEAL
 Ricardo Perez, AIA
 NY 0007431 MA 30276
 Stephen L. Radosti, AIA
 NJ 13369 FL 93870

Perez + Radosti
 associates, p.c.
 P+R Architecture
 Interior Design
 www.prenj.com
 379 pincelton hightstown rd, suite 308, cranbury, nj 08512 tel. 609.443.4031 fax 609.443.5277

DRAWING TITLE
 PROPOSED WAREHOUSE
 FLOOR PLAN
 & ELEVATIONS
 SHEET NUMBER
CS-1
 OF